

**Simple.** Simplicity drives productivity. Our #1 advantage is that users feel comfortable with our software. This results in your team getting their work done as quickly as possible.

**Projecto™** is an industry-unique software solution built from the owner's perspective for managing a portfolio of capital, construction, and facilities renovation projects.

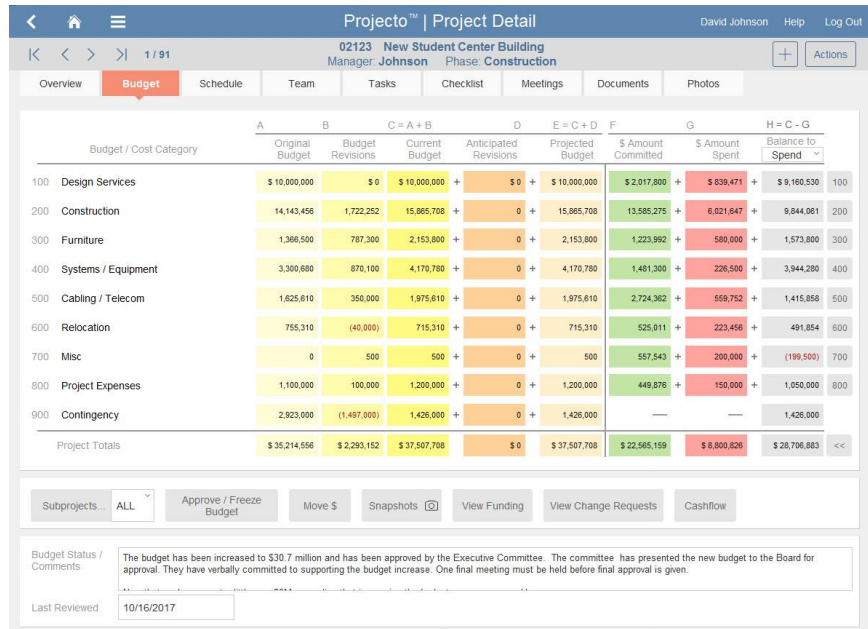
- Projecto™ is focused on project finance – budgeting, forecasting, funding, approvals, POs, contracts, and invoice processing.
- The Wizard Software Enterprise Simple Portal™ can streamline the process of reconciling Projecto™ with enterprise ERP data from systems like Oracle, PeopleSoft, Lawson, and SAP.
- Projecto™ also makes it easy to manage approval routing, scheduling, document/photo management, reporting, and team collaboration.

*“Projecto™ is outstanding! It's very user-friendly and easy to learn. Our Project Managers can monitor budgets, schedules, fees, invoices all in one program.”*

**Jacki Lindsay**, Project Manager  
Colorado State University

**Powerful.** Our solutions are built for performance and scalability, with industry-standard technologies that reach out to your entire organization and work with your enterprise software systems.

**Flexible.** We respect that every organization is unique. Our solutions can work off-the-shelf, or they can be easily tailored to your unique processes and workflows.



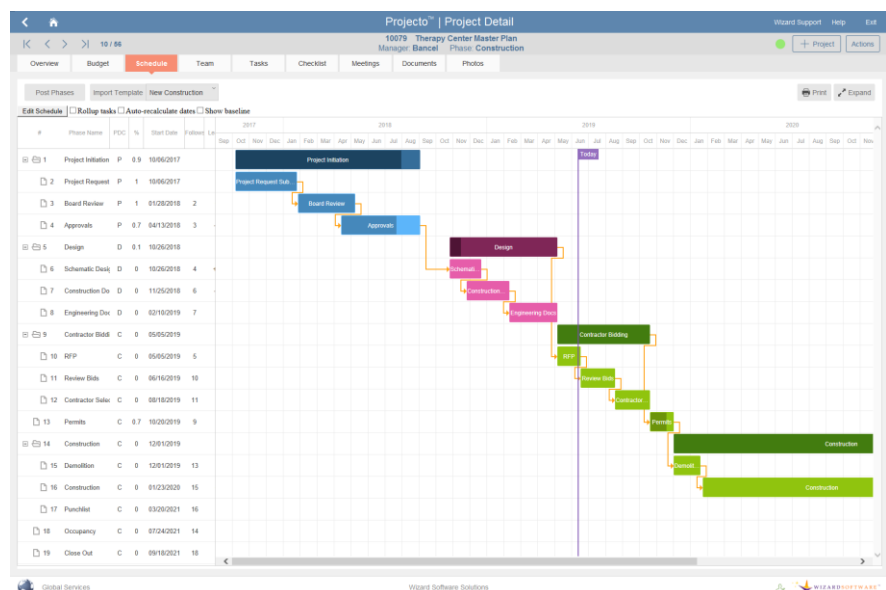
Projecto™ | Project Detail  
02123 New Student Center Building  
Manager: Johnson Phase: Construction

Budget / Cost Category	A	B	C = A + B	D	E = C + D	F	G	H = C - G
	Original Budget	Budget Revisions	Current Budget	Anticipated Revisions	Projected Budget	\$ Amount Committed	\$ Amount Spent	Balance to Spend
100 Design Services	\$ 10,000,000	\$ 0	\$ 10,000,000	\$ 0	\$ 10,000,000	\$ 2,017,800	\$ 839,471	\$ 9,160,530
200 Construction	14,143,458	1,722,252	15,865,708	0	15,865,708	13,585,275	6,021,647	9,844,061
300 Furniture	1,366,500	787,300	2,153,800	0	2,153,800	1,223,992	580,000	1,573,800
400 Systems / Equipment	3,300,680	870,100	4,170,780	0	4,170,780	1,481,300	226,500	3,944,280
500 Cabling / Telecom	1,625,610	350,000	1,975,610	0	1,975,610	2,724,382	559,752	1,415,858
600 Relocation	755,310	(40,000)	715,310	0	715,310	525,011	223,456	491,854
700 Misc	0	500	500	0	500	557,543	200,000	(199,500)
800 Project Expenses	1,100,000	100,000	1,200,000	0	1,200,000	449,876	150,000	1,050,000
900 Contingency	2,923,000	(1,497,000)	1,426,000	0	1,426,000	—	—	1,426,000
<b>Project Totals</b>	<b>\$ 35,214,558</b>	<b>\$ 2,293,152</b>	<b>\$ 37,507,708</b>	<b>\$ 0</b>	<b>\$ 37,507,708</b>	<b>\$ 22,565,159</b>	<b>\$ 8,800,826</b>	<b>\$ 28,706,883</b>

Subprojects: ALL | Approve / Freeze Budget | Move \$ | Snapshots | View Funding | View Change Requests | Cashflow

Budget Status / Comments: The budget has been increased to \$30.7 million and has been approved by the Executive Committee. The committee has presented the new budget to the Board for approval. They have verbally committed to supporting the budget increase. One final meeting must be held before final approval is given.

Last Reviewed: 10/16/2017



Top; Project Budget Screen, bottom; Project Schedule screen

# Projecto™ Features & Functionality

## Flexible Deployment Options

### Cloud-Based

Secure access from anywhere 24x7x365 and superior performance in the Cloud with minimal to zero resources needed from your already tapped IT department. Your data is owned 100% by you.

### On-Premise

Installed and deployed on your own servers, behind your firewall. Still supported 100% by your experienced Wizard Software professional services staff.

### Mobile Solutions

Our mobile solutions are designed to provide the information you need on the go. Works on nearly all current iOS and Android devices.



**WIZARD SOFTWARE**  
SOLUTIONS

4147 North Ravenswood Avenue  
Chicago, Illinois 60613  
773.832.0200

[www.wizardsoftware.net](http://www.wizardsoftware.net)  
[info@wizardsoftware.net](mailto:info@wizardsoftware.net)

© Wizard Software Solutions

## Project Management

- ▶ A centralized database of all projects and related information -- find, sort, and report a list of any projects you want in only a few clicks.
- ▶ Quickly find and compare project totals by project manager, department, type, phase, cost center, capital vs. expense, location, or any other field.
- ▶ Keep all companies, vendors, contacts and contact info in a central location.
- ▶ Prepare and maintain detailed and professional-looking project schedules.
- ▶ Track a chronological history of project statuses and progress photos.
- ▶ Upload/download project documents and collaborate with your team.
- ▶ Assign and manage tasks and RFIs from a central project location.
- ▶ Allow or prevent data entry using configurable role-based security settings.

## Project Accounting and Financial Management

- ▶ Easily configure your own budget, cost and accounting categories.
- ▶ Build project budgets based on historical project costs per square foot.
- ▶ Create 'Subprojects' to manage phases or financial categories within a project.
- ▶ Create budget snapshots to analyze and compare the evolution of a project.
- ▶ Track and monitor participation of minority/women business enterprises.
- ▶ Prepare automated cashflow forecasts based on budget, actuals, and schedule.
- ▶ Create requisitions, POs, contracts and change orders, invoices, and internal project charges/expenses with just a few clicks.
- ▶ Reconcile transactions in Projecto™ against your enterprise accounting system.
- ▶ Allocate project costs across multiple capital budgets or funding sources.
- ▶ Configure a pre-defined routing of automated, electronic approvals for POs, contract, invoices, or any type of transaction you require.

## Powerful Reporting

- ▶ Hundreds of off-the-shelf pre-formatted, consistent and professional reports.
- ▶ Customizable dashboards and KPIs.
- ▶ Reports are available for single projects, a set of projects based on your own criteria, or executive-level summaries of data by any number of categories.
- ▶ Easily build and deploy new reports on your own.
- ▶ Reports can be sent to your printer, generated as PDF, or direct Excel output.
- ▶ Reports can be scheduled in advance to be automatically triggered or sent on a regular basis (weekly, monthly, etc.) to designated individuals or teams.
- ▶ Available Audit Trail module records a detailed history of all data edits

## Web-Based Interfaces and Mobile Apps

- ▶ Web interface for third party vendors to manage submittals and tasks.
- ▶ Project Manager and Project Executive mobile applications.
- ▶ Web-based capital project request interface for company staff.
- ▶ Instantly publish project information to your department web site for executives, owner-users and stakeholders.