

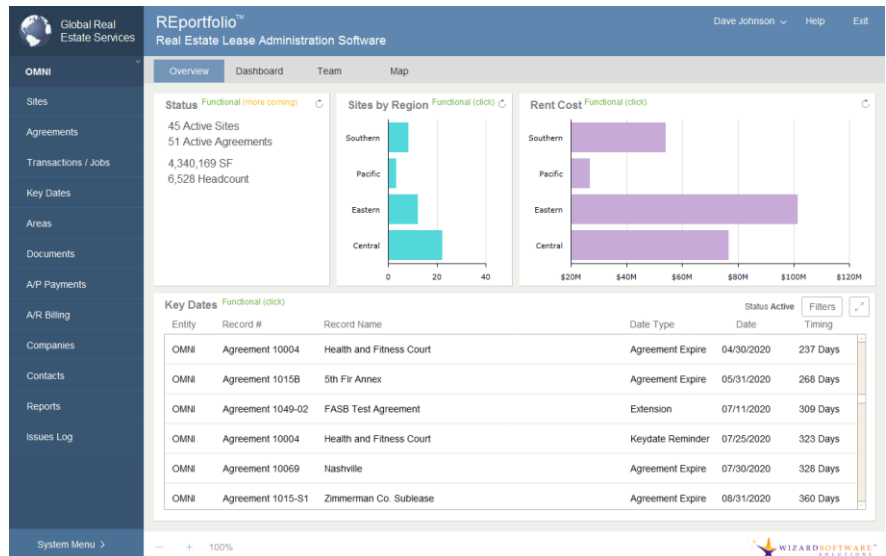
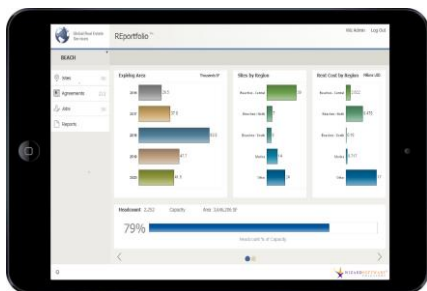
Simple. Simplicity drives productivity. Our #1 advantage is that users feel comfortable with our software. This results in your team getting their work done as quickly as possible.

Powerful. Our solutions are built for performance and scalability, with industry-standard technologies that reach out to your entire organization and work with your enterprise software systems.

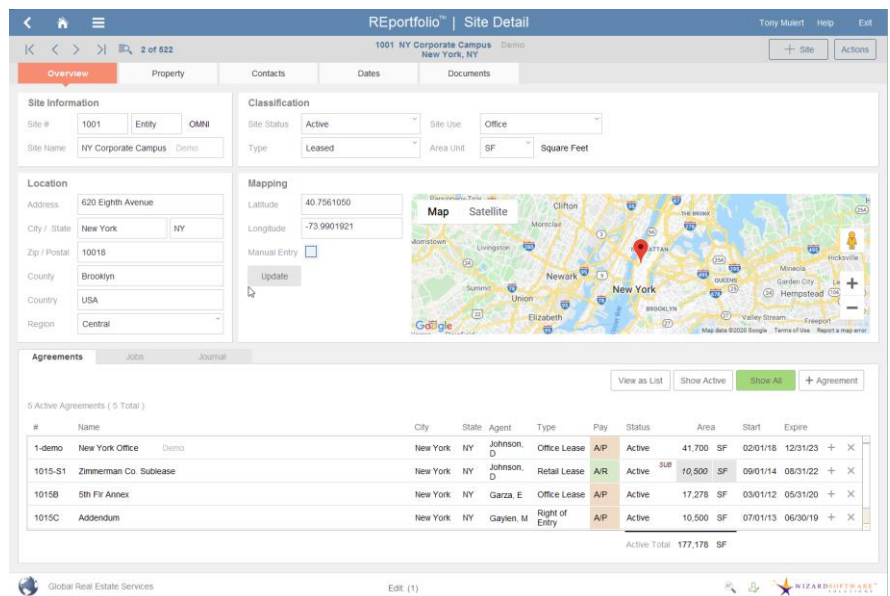
Flexible. We respect that every organization is unique. Our solutions can work off-the-shelf, or they can be easily tailored to your unique processes and workflows.

REportfolio™ is an industry-unique complete software solution for the management and administration of diverse property and asset portfolios.

- REportfolio™ lets your group track owned and leased site information, office and land leases, permits, easements, equipment leases, plus any number of agreement types.
- REportfolio™ JOBS helps you track, monitor, and report on the status of all workgroup portfolio transactions.
- REportfolio™ will forecast, track, and report portfolio costs (A/P) and revenues (A/R), plus remind your team of critical approaching portfolio dates.



REportfolio Home Screen



REportfolio Site Detail

Flexible Deployment Options

On-Premise

Installed and deployed on your own servers, behind your firewall. Still supported 100% by your experienced Wizard Software professional services staff.

On-Demand

Secure access from anywhere 24x7x365 and superior performance in the Cloud with minimal to zero resources needed from your already tapped IT department. Your data is owned 100% by you.



WIZARD SOFTWARE
SOLUTIONS

4147 North Ravenswood Avenue
Chicago, Illinois 60613
773.832.0200

www.wizardsoftware.net
info@wizardsoftware.net

Features & Functionality

Real Property Administration

- ▶ A centralized database of all sites, properties, locations and related information -- find, sort, and report a list of any property or agreement you want in only a few clicks.
- ▶ Manage multiple types of agreements at each location -- leases, subleases, ground/land leases, permits, easements, rights-of-entry, equipment leases.
- ▶ Handle financial forecasting and reporting in US dollars or foreign currencies.
- ▶ Manage properties and agreements in square feet, square meters, or acres.
- ▶ Prepare monthly reports or ledgers of payments or tenant/lessee invoices.
- ▶ Allocate costs or revenues to your own accounting codes.
- ▶ Attach and manage an unlimited number of documents to agreement records.
- ▶ Be reminded of approaching critical portfolio dates – by on-screen alerts, automated scheduled emails, or on-demand reports.
- ▶ REportfolio™ JOBS helps you track, monitor, and report on the status of all workgroup portfolio transactions.
- ▶ Keep all tenants, landlords, contacts and contact info in a central location.
- ▶ Easily enter and track agreement information related to insurance policies, storage, parking, headcount/area allocation, and security deposits.

Powerful Reporting

- ▶ Hundreds of off-the-shelf pre-formatted, consistent and professional reports.
- ▶ Reports are available for a single property or agreement, a set of records based on your own criteria, or executive-level summaries of data by any number of categories.
- ▶ Reports include cost and revenue forecasting, rent rolls, lease and agreement abstracts, straight-line accounting, tenant invoices, statements, and aging accounts receivable reports, just to name a few.
- ▶ Easily build and deploy new reports on your own.
- ▶ Reports can be sent to your printer, generated as PDF, or direct Excel output.
- ▶ Reports can be scheduled in advance to be automatically triggered or sent on a regular basis (weekly, monthly, etc.) to designated individuals or teams.
- ▶ Available Audit Trail module records a detailed granular history of all system data created, edited, and modified by all users.

Integrates with Enterprise Data

- ▶ The Wizard Software Enterprise Simple Portal™ can streamline the process of reconciling REportfolio™ with enterprise ERP data from systems like Oracle, PeopleSoft, Lawson, and SAP.

Interfaces to Match Different User Types

- ▶ Allow or prevent data entry using configurable role-based security settings.
- ▶ Instantly publish portfolio information to a department web site for executives, owner-users and stakeholders.